



# Welcome to Corona Friends

A Place for Gatherings, Growth, and Community.



*Small Group  
Meeting Spaces*



*Large Conference Space*



*Large Outdoor  
Event Area*





# ABOUT US

Corona Friends Church has been part of the Corona community since the fall of 1993. In 2001, we opened our Ontario Avenue property, which now sits on 4.8 acres of land. From the beginning, this space has been used not only for worship and ministry but also as a place where the community can gather, celebrate, and connect.

Our mission is simple yet life-changing: transforming lives, healing hearts, and building a brighter future. That vision guides everything we do, including the way we open our doors for community events.

Our facility is available for rentals when not being used for our weekly ministry programs or Sunday services. Whether you are planning a wedding, reception, banquet, meeting, or special event, we are honored to provide a welcoming and versatile environment for your occasion.





# 2025 Rental Prices

## Weddings

Celebrate your special day in a warm and welcoming setting. Our space offers a beautiful backdrop for your ceremony.

## Receptions

Host your reception in our spacious gym. There's plenty of room for dining, dancing, and celebration.

## Wedding & Reception

Enjoy the convenience of one location for both. From vows to the last dance, we've got you covered.

## Memorial Service

Honor your loved one in a peaceful and respectful setting. A place for family and friends to gather and remember.

## Large Conference / Meeting

Our 5,563 ft<sup>2</sup> space is flexible for meetings, trainings, or conferences. Designed to help groups focus and connect.

## Small Meetings / Breakouts

Our 483 ft<sup>2</sup> spaces are perfect for workshops or small groups. Comfortable rooms for discussion and collaboration.

## Sporting Practices

Train in our gym or on our fields. Safe, spacious environments for athletes to grow.

## Sporting Tournaments

Host your tournament indoors or outdoors. Plenty of space for teams, games, and fans.

## Outdoor Field Use

Open fields for gatherings, or outdoor events. Flexible space to fit your needs.

## Whole Campus Use

Access our entire 4.8-acre property. Indoor and outdoor spaces tailored for your event.

## PLEASE NOTE:

\*\* Additional Fees and prices are assigned based off of type of event and resources / personal requested. See the next two pages for additional cost details.

### **\$175/hr Sat | \$150/hr M & Th** **2 Hr Minimum - 4 Hr Maximum**

This is the base rental price and does not include the additional rental fees located on the next page for this type of event.  
Room Size - 5,563 ft<sup>2</sup> | Seating Capacity - 750

### **\$225/hr Sat | \$200/hr M & Th** **2 Hr Minimum - 4 Hr Maximum**

This is the base rental price and does not include the additional rental fees located on the next page for this type of event.  
Room Size - 5,563 ft<sup>2</sup> | Seating Capacity - 250 Banquet

### **\$225/hr Sat | \$175/hr M & Th** **4 Hr Minimum - 6 Hr Maximum**

This is the base rental price and does not include the additional rental fees located on the next page for this type of event.  
Room Size - 5,563 ft<sup>2</sup> | Seating Capacity - Determined By Setup

### **\$175/hr M, Th, & Sat** **2 Hr Minimum - 4 Hr Maximum**

This is the base rental price and does not include the additional rental fees located on the next page for this type of event.  
Room Size - 5,563 ft<sup>2</sup> | Seating Capacity - 750

### **\$200/hr Sat | \$150/hr M & Th** **3 Hr Minimum - 6 Hr Maximum**

This is the base rental price and does not include the additional rental fees located on the next page for this type of event.  
Room Size - 5,563 ft<sup>2</sup> | Seating Capacity - Determined By Setup

### **\$60/hr Sat | \$50/hr M & Th | Per Room** **2 Hr Minimum - 4 Hr Maximum**

This is the base rental price and does not include the additional rental fees located on the next page for this type of event.  
Room Size - 483 ft<sup>2</sup> | Seating Capacity - Determined By Event

### **\$150/hr Indoor | \$100/hr Outdoor | M, Th, Sat** **2 Hr Minimum - 4 Hr Maximum**

This is the base rental price and does not include the additional rental fees located on the next page for this type of event.  
Room Size - 5,563 ft<sup>2</sup> | Field Size - 31,280 ft<sup>2</sup> | Court Size - Full Court

### **\$175/hr Indoor | \$125/hr Outdoor | M, Th, Sat** **3 Hr Minimum - 4 Hr Maximum**

This is the base rental price and does not include the additional rental fees located on the next page for this type of event.  
Room Size - 5,563 ft<sup>2</sup> | Field Size - 31,280 ft<sup>2</sup> | Court Size - Full Court

### **\$60/hr M, Th, & Sat** **3 Hr Minimum - 4 Hr Maximum**

This is the base rental price and does not include the additional rental fees located on the next page for this type of event.  
Field Size - 31,280 ft<sup>2</sup>

### **\$380/hr Sat | \$300/hr M & Th** **4 Hr Minimum - 6 Hr Maximum**

This is the base rental price and does not include the additional rental fees located on the next page for this type of event.  
Room Size - Various | Field Size - 31,280 ft<sup>2</sup>





## Additional Personal Rentals



### Licensed Pastor Donations Requested

Available to officiate weddings, memorials, and other special services.



### Sound/Media Operator \$150 ea 4 Hrs

Skilled support to ensure smooth audio, video, and technical needs for your event.



### Event Host \$200 ea 4 Hrs

Provides on-site coordination and assistance to help your event run smoothly from start to finish.



**951-340-3401**

## Additional Rentals



### 6' (72") Round Tables \$15 Each | 28 Available

Plastic | White Top | Grey legs  
Seats 6-8 People



### 8' Rectangle Tables \$5 Each | 9 Available

Plastic | White Top | Grey Legs  
Seats 10 People



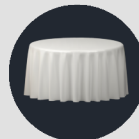
### 6' Rectangle Tables \$5 Each | 4 Available

Plastic | White Top | Grey Legs  
Seats 8 People



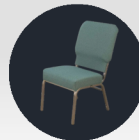
### 4' Rectangle Tables \$5 Each | 4 Available

Plastic | White Top | Grey Legs  
Seats 6 People



### 70" Round Table Cloths \$10 Each | Fabric

14 White, 8 Black, 10 Royal Blue,  
10 Brown, 10 Yellow, 2 Green  
Cost includes laundering charge



### Padded Green Chairs 230 Available

Fabric | Padded | Green  
Included with Rental Cost





## Fees and Deposits

### Setup / Teardown Fee

**\$60 | Non-Refundable**

For table set up, clean up, teardown, extra staff time.

### Cleaning Fee

**\$100 | Non-Refundable**

Professional cleaning after event (floor, restrooms, carpets, trash removal), returning space to rental standard.

### Security / Damage Deposit

**\$150 | Refundable (If No Damage)**

To cover damage beyond "normal wear and tear," missing inventory, property repairs.

### Key Deposit

**\$200 | Refundable**

Deposit for keys, fobs, or special access; also for failure to return them.

## Payment Schedule

Renter may choose to pay the full contract amount at the time of signing. Alternatively, payment may be made according to the following schedule:

- 20% of the total rental fee is due at the time of signing to secure the reservation.
- The remaining balance due no later than 14 days (2 weeks) prior to the event date.

A separate security/damage deposit is required in the form of a separate check, which will be held and returned after the event provided no damages or additional fees are incurred.



# Worship CENTER

ROOM SIZE

5,563 ft<sup>2</sup>



**SPACIOUS LAYOUT**



**CUSTOMIZABLE COLORS**



**SPECIAL SEATING AREAS**



**FULL TECH SERVICES**



**OUTDOOR COVERED  
WELCOME AREA**

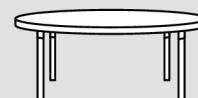


**MEN'S & WOMEN'S  
RESTROOMS**

Our Worship Center offers 5,563 sq. ft. of versatile event space (80' x 69'), making it ideal for large gatherings, celebrations, and events. The room can be arranged to fit a variety of needs: up to 28 round tables (72") with seating for 6-8 guests each, or theater-style seating. We provide **230 in-house green chairs**, and additional seating may be rented through an outside vendor, accommodating up to 794 guests.

With its expansive layout and flexible setup, the Worship Center is designed to host your event with comfort, style, and room to grow.

## THIS ROOM ACCOMMODATES:



**28** 72" Round  
Tables



**230-790**  
Guest Seating



# Multi-Purpose ROOM

ROOM SIZE

500 ft<sup>2</sup>



**COMPUTER SETUP WITH  
INTERNET & AUDIO**



**COFFEE & FOOD TABLE**

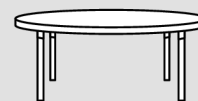


**MEN'S & WOMEN'S  
RESTROOMS**

This 500 sq. ft. Multi-Purpose Room (17' x 29'5") offers a flexible and welcoming space for your event. Ideal for meetings, workshops, parties, or intimate gatherings, this room can be arranged to suit a variety of needs. It accommodates up to five 72" round tables with seating for 6-8 guests each, making it perfect for groups of 30-40 people. Rectangle tables also available.

With its adaptable layout and atmosphere, the Multi-Purpose Room is designed to help your event feel professional and personal.

## THIS ROOM ACCOMMODATES:



**5** 72" Round  
Tables



**30-40**  
Grey Padded Chairs



# Youth ROOM

ROOM SIZE

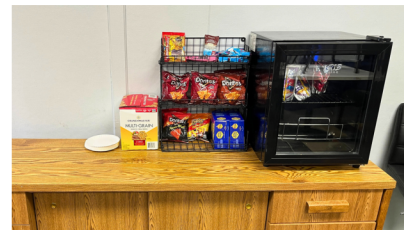
480 ft<sup>2</sup>



**SPACIOUS LAYOUT**



**SPECIAL SEATING AREAS**



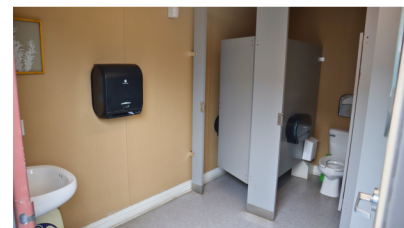
**COFFEE & FOOD TABLE**



**COMPUTER SETUP WITH INTERNET & AUDIO**



**GAME & SPECIAL ACTIVITY AREA**

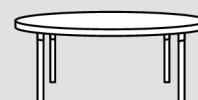


**MEN'S & WOMEN'S RESTROOMS**

The Youth Room provides 480 sq. ft. of dynamic, adaptable space (17' x 28'5"), currently designed as a dedicated youth ministry environment. The room features 3 plush couches, high-top seating areas, a full sound and computer system, plus spaces for board games, art, and gaming—making it a lively and comfortable setting for students.

For other uses, the room can be converted into a meeting space, accommodating 5 round tables (72") with 6–8 chairs each. Whether you're planning a youth gathering, casual event, or small-group meeting, the Youth Room offers both energy and flexibility.

## THIS ROOM ACCOMMODATES:



**5** 72" Round Tables



**15-20** Grey Padded Chairs



# Friends Kids ROOM

ROOM SIZE

480 ft<sup>2</sup>



**COMPUTER SETUP WITH  
INTERNET & AUDIO**



**ADAPTABLE ROOM  
ATMOSPHERE & LAYOUT**

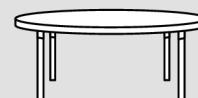


**MEN'S & WOMEN'S  
RESTROOMS**

The Friends Kids Room offers 480 sq. ft. of flexible space (17' x 28'5") that can be tailored to meet your event needs. Currently set up as a children's classroom with 4 kid-sized tables and 26 chairs, the room can also be arranged to accommodate up to 5 round tables (72") with seating for 6-8 guests each.

Whether used for a children's program, breakout session, or a small gathering, this versatile space provides a welcoming environment that adapts to a variety of purposes.

## THIS ROOM ACCOMMODATES:



**5** 72" Round  
Tables



**30-40**  
Green Padded Chairs



# Nursery ROOM

ROOM SIZE

390 ft<sup>2</sup>



**COMPUTER SETUP WITH  
INTERNET & AUDIO**



**ADAPTABLE ROOM  
ATMOSPHERE & LAYOUT**

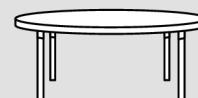


**MEN'S & WOMEN'S  
RESTROOMS**

Our Nursery room offers 390 sq. ft. of cozy, flexible space (17' x 23'), currently designed as a nursery with 2 infant tables, small chairs, toddler toys, and age-appropriate furniture. While perfect for childcare or family needs, this space can also be converted for adult use.

The room can accommodate up to 3 round tables (72") with 6-8 chairs each, making it a versatile option for smaller meetings, workshops, or intimate gatherings. Whether serving as a nursery or a functional meeting room, the Nursery Room adapts to fit your event.

## THIS ROOM ACCOMMODATES:



**3** 72" Round  
Tables



**18-24**  
Green Padded Chairs